



**PFEIFFER** 

# Sealing gas throttle

PFEIFFER 

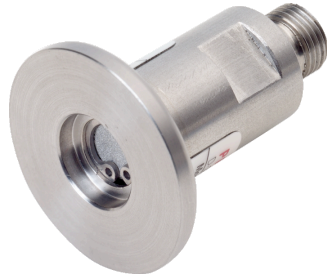
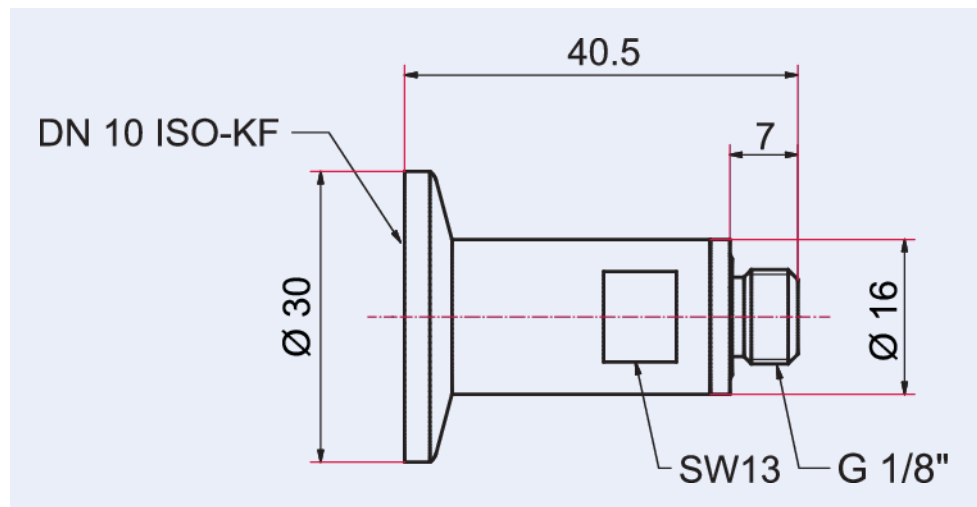


Illustration only

## Sealing gas throttle for HiPace 1200-2300

- Reliably prevents harmful substances from entering the engine and bearing area
- Suitable for HiPace 1200 – 2300
- G 1/8" connection
- DN 10 ISO-KF

## Dimensions



<b>Technical Data</b>	<b>Sealing gas throttle for HiPace 1200–2300</b>
Thread	G 1/8"
Weight approx.	60 g
Gas flow at atmospheric pressure	22 – 27 sccm (0 °C)
Inlet pressure max.	1500 hPa (absolute)
Weight	60 g
Connection flange (in)	DN 10 ISO-KF
Connection flange (out)	G 1/8"

<b>Order number</b>	<b>Sealing gas throttle for HiPace 1200–2300</b>
Sealing gas throttle for HiPace 1200–2300	PM Z01 319



Errors and/or changes excepted. - 5/14/2025

**Are you looking for an optimum vacuum solution?**

**Talk to us:**

**Pfeiffer Vacuum GmbH**

**Germany**

**T +49 6441 802-0**

**Or scan the barcode, to visit our web page:**



<https://webportal.pfeiffer-vacuum.com/global/en/contact>

**Follow Us On Social Media**

**#pfeiffervacuum**



[www.pfeiffer-vacuum.com](http://www.pfeiffer-vacuum.com)

**PFEIFFER** 