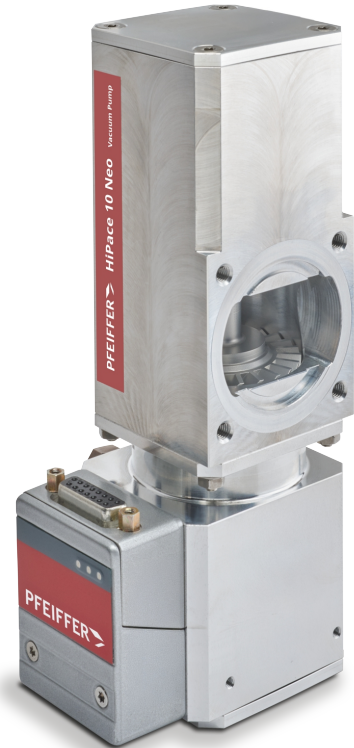


# HiPace 10 Neo

Turbomolecular vacuum pump

**PFEIFFER**   
VACUUM+FAB SOLUTIONS

Part of the **BUSCH** GROUP



## Compact

Smallest turbomolecular vacuum pump on the market

## Reliable

Most robust turbomolecular vacuum pump on the market thanks to mechanical bearings

## Flexible

Automatic accessory detection, specially designed for mobile use, portable

Accessories, spare parts and options

- Electrical adapter
- Mains cable
- Connecting cable
- CIP adapter
- Power supply kit and display unit
- Pressure sensor
- Mounting kit
- Safety valve
- Venting accessories
- Power failure venting unit

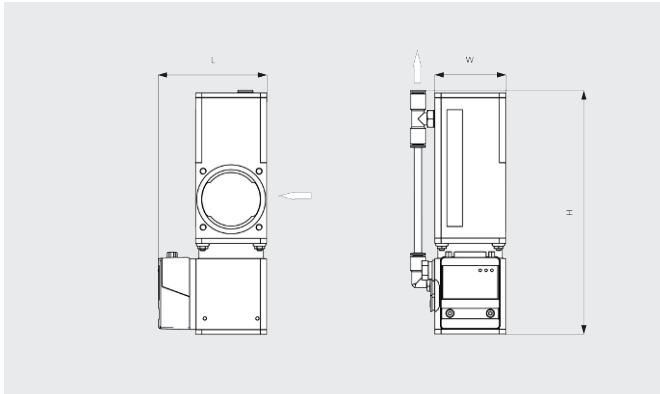
# HiPace 10 Neo

Turbomolecular vacuum pump

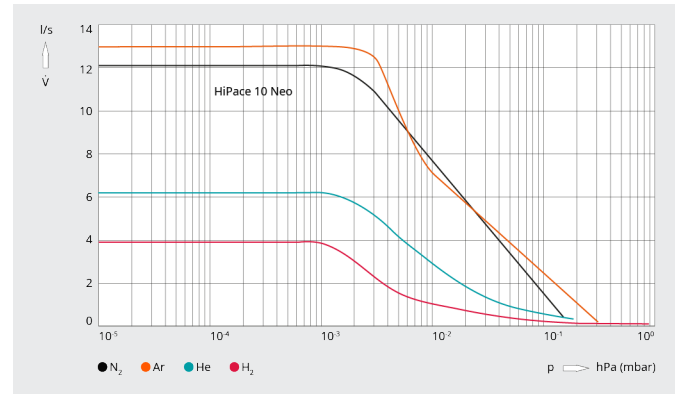
**PFEIFFER**  
VACUUM+FAB SOLUTIONS

Part of the **BUSCH** GROUP

Dimensional drawing



Pumping speed



HiPace 10 Neo	
I/O interfaces	RS485, remote
Sound pressure level (EN ISO 2151)	<50 dB(A)
Protection class	IP20 type 1
Run-up time	45 s
Ultimate pressure	$5 \cdot 10^{-5}$ hPa(mbar)
Pumping speed for Ar	13 l/s
Pumping speed for H <sub>2</sub>	4 l/s
Pumping speed for He	6.5 l/s
Pumping speed for N <sub>2</sub>	12 l/s
Input voltage(s)	24 V DC ( $\pm 10\%$ )
Compression ratio for Ar	$2.5 \cdot 10^7$
Compression ratio for H <sub>2</sub>	$3 \cdot 10^2$
Compression ratio for He	$3 \cdot 10^3$
Compression ratio for N <sub>2</sub>	$3 \cdot 10^6$
Forevacuum max. for N <sub>2</sub>	25 hPa(mbar)
Bearing	Ball bearing

# HiPace 10 Neo

Turbomolecular vacuum pump

**PFEIFFER**   
VACUUM+FAB SOLUTIONS

Part of the **BUSCH** GROUP

HiPace 10 Neo	
Rotational speed $\pm 2\%$	90,000 min <sup>-1</sup>
Rotational speed variable	50 – 100%
Mounting orientation	Arbitrary
Dimensions (L x W x H)	83.4 x 55 x 186 mm
Weight	1.3 kg

## DO YOU WANT TO KNOW MORE?

Get in touch with us directly!



CONTACT FORM