

Double Claw Clamp, Zinc-plated Steel, DN 63-250 ISO-K



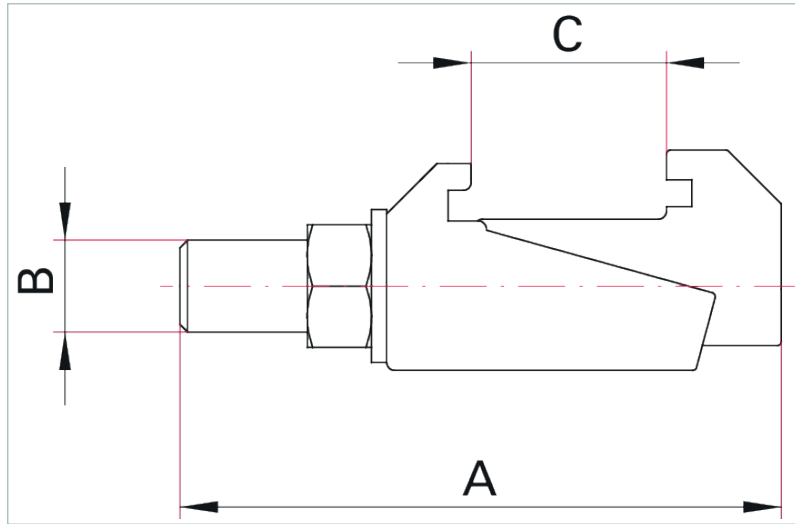
Similar Image

Double Claw Clamp, Zinc-plated Steel, DN 63-250 ISO-K

- Suitable for use with metal and elastomer seals
- Not to be used for the installation of turbo pumps

Not to be used for the installation of turbo pumps! Use the fastening elements given in the corresponding operating instructions.

Dimensions



A	61.5 mm
B	M10
C	15 mm - 27 mm

Technical Data	Double Claw Clamp, Zinc-plated Steel, DN 63-250 ISO-K
Material	Zinc-plated steel
Nominal diameter	DN 63-250 ISO-K
Temperature range	0 to 200 °C
Torque	(for installation) DN 63-250: 12 to 16 Nm; DN 32 0-630: 20 to 26 Nm

Order number	
Double Claw Clamp	350BKL250

VACUUM SOLUTIONS FROM A SINGLE SOURCE

Pfeiffer Vacuum stands for innovative and custom vacuum solutions worldwide, technological perfection, competent advice and reliable service.

COMPLETE RANGE OF PRODUCTS

From a single component to complex systems:

We are the only supplier of vacuum technology that provides a complete product portfolio.

COMPETENCE IN THEORY AND PRACTICE

Benefit from our know-how and our portfolio of training opportunities!

We support you with your plant layout and provide first-class on-site service worldwide.

Are you looking for a
perfect vacuum solution?
Please contact us:

Pfeiffer Vacuum GmbH
Headquarters · Germany
T +49 6441 802-0
info@pfeiffer-vacuum.de

www.pfeiffer-vacuum.com

All data subject to change without prior notice.

PFEIFFER  **VACUUM**